

INSTALLATION INSTRUCTIONS

57-2546

Ford

2003-04 F250/F350 Super Duty

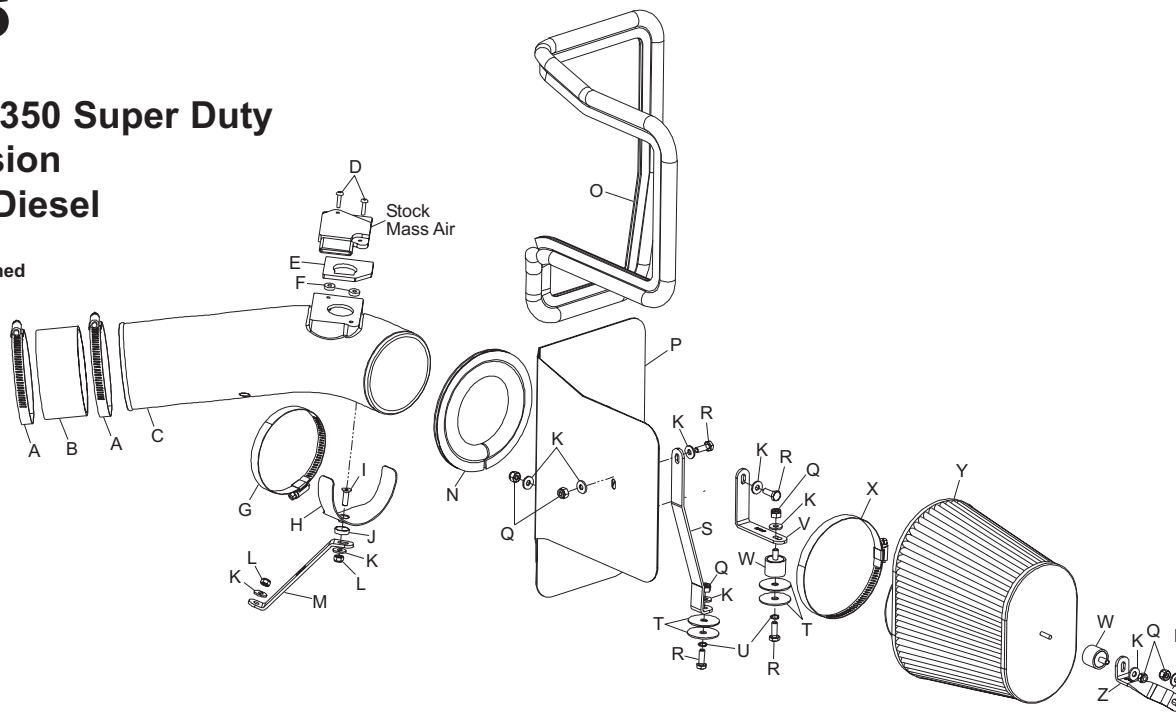
2003-04 Excursion

V8-6.0L Turbo Diesel

NOTE: This kit was not designed to fit vehicles with a body lift.

TOOLS NEEDED

Flat Blade Screwdriver
10mm Socket
long extension
7/16 wrench
Ratchet
7/16 socket
4mm Allen
2.5 Allen

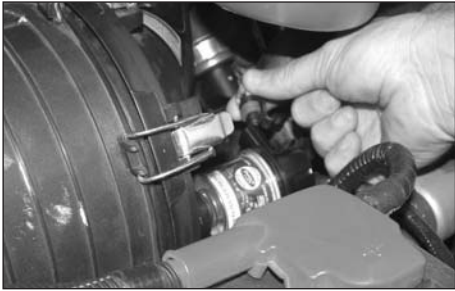


PARTS LIST:

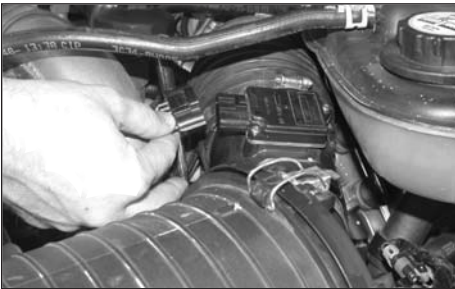
Desc.	QTY.	Part #
A hose clamp #64	2	08645
B silicone hose	1	08761
C intake tube (CY)	1	087093
D bolt; buttonhead allen	2	07793
E gasket	1	09068
F spacers	2	06530
G hose clamp #60	1	08628
H saddle bracket	1	078855
I bolt; 6mm f/h/a	1	08376
J cup washer	1	08180
K washer 1/4 flat	10	08275
L nut 6mm nylock	2	07553
M bracket	1	07174
N edge trim 20" side mount	1	102476
O edge trim 57"	1	102470
P heat shield	1	074006
Q nut 1/4"-20 nylock	6	07517
R bolt 1/4"-20x3/4" hex	4	08386
S bracket	1	07175
T washer 1.5"odx1/4"id flat	4	21714
U washer 1/4 lock	2	08198
V bracket; lg "L"	1	07177
W stud rubber mntd	2	070226
X hose clamp #72	1	08671
Y filtercharger	1	RC-5102
Z bracket; twist wrench; torx T20 t/r, I-key	1	69801

TO START:

1. Turn the ignition OFF and disconnect the vehicle's negative battery cable.



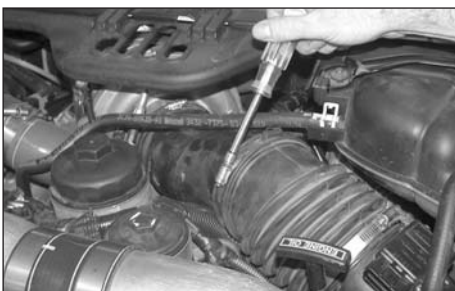
2. Disconnect the restrictor gauge electrical connection as shown.



3. Disconnect the mass air electrical connection as shown.



4. Release the four clamps that retains the front and back of air box.



5. Loosen the hose clamp at the turbo inlet.



6. Loosen the hose clamp at the mass air sensor, then remove the intake hose from the vehicle.



7. Remove the filter housing from vehicle as shown.



8. Remove the air box base as shown.



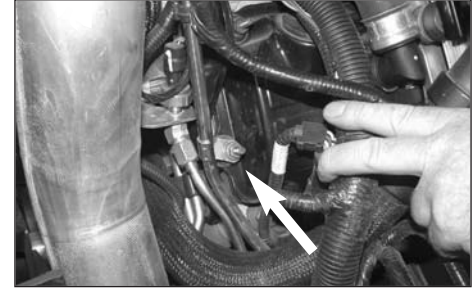
9. Remove the air box top as shown.



10. Remove the rubber grommets that retain the air box assembly onto the vehicle.



11. Install the rubber mounted stud onto the air box mounting bracket with the provided hardware as shown.



12. Remove the valve cover bolt which retains the dip stick onto the motor with a 10mm socket.



13. Assemble the bracket and saddle as shown.



14. Install the saddle bracket assembly onto the motor with the nut that was removed in step 12.



15. Install the provided silicone hose (08761) onto the turbo inlet with the provided hose clamps.



16. Remove the air filter restriction gauge and grommet from the factory air box.



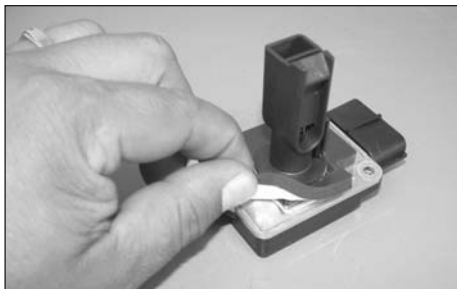
17. Install the factory grommet and restriction gauge onto the new K&N intake tube as shown.



18. Remove the mass air sensor from the factory air box lid with the provided torx wrench as shown.



19. Remove the factory O ring from the mass air sensor as shown.



20. Install the provided gasket onto the mass air sensor with the sticky side down.



21. Install the mass air sensor onto the new K&N intake with the provided screws and spacers as shown.



22. Install the new intake tube onto the turbo inlet with the provided hose clamp.



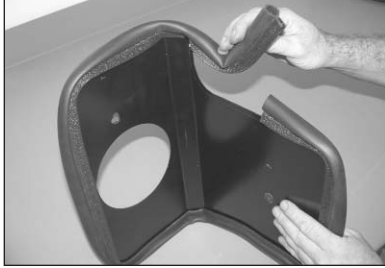
23. Secure the intake tube to the saddle bracket with the provided hose clamp as shown.



24. Reconnect the restrictor gauge electrical connection as shown.



25. Reconnect the mass air sensor electrical connection as shown.



26. Install the edge trim onto the heat shield as shown. Trim if needed.



27. Install the edge trim onto the inner hole on the heat shield as shown. Trim if needed.



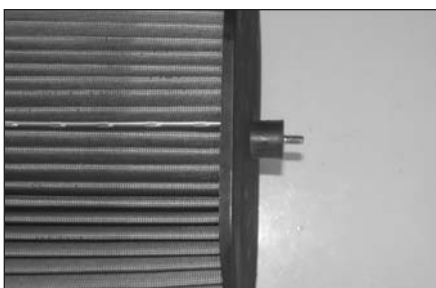
28. Install the two brackets onto the heat shield with the provided hardware as shown. Do not tighten completely.



29. Install the heat shield assembly onto the vehicle as shown.



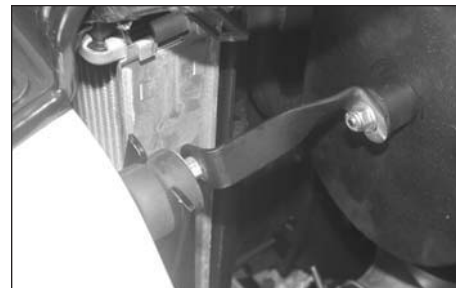
30. Mount the heat shield onto the rubber mounted stud and then secure the long "L" bracket onto the air box mount with the provided bolt and washers.



31. Install the provided rubber mounted stud onto the K&N Filtercharger as shown.



32. Install the filtercharger element onto the intake tube as shown. **NOTE: Adjust all bracket and heat shield to obtain maximum clearance along the sides and under filter, then tighten the filter charger as shown.**



33. Install the provided bracket onto the radiator mount stud and the filter stud with the provided hardware.



34. Double check to make sure everything is tight and properly positioned before starting vehicle.

35. Reconnect the vehicle's negative battery cable. Double check to make sure everything is tight and properly positioned before starting the vehicle.

36. It will be necessary for all Aircharger's to be checked periodically for realignment, clearance and tightening of all connections. Failure to follow the above instructions or proper maintenance may void warranty.

ROAD TESTING:

1. Start the engine with the transmission in neutral or park, and the parking brake engaged. Listen for air leaks or odd noises. For air leaks secure hoses and connections. For odd noises, find cause and repair before proceeding. This kit will function identically to the factory system except for being louder and much more responsive.

2. Test drive the vehicle. Listen for odd noises or rattles and fix as necessary.

3. If road test is fine, you can now enjoy the added power and performance from your kit.

4. K&N suggests checking the Filtercharger element periodically for excessive dirt build-up. When the element becomes covered in dirt (or once a year), service it according to the instructions on the Recharger service kit, part number 99-5000 or 99-5050.

IMPORTANT:

Service air filter according to the K&N cleaning instructions (99-5050) when the indicator on the restriction gauge is in the 50 to 65% range. On vehicles that come with an electric restrictor gauge, you must read the gauge manually, do not wait until the dash light illuminates. Do not run the vehicle with the indicator above the 65% range, as damage to the air filter and or the engine could result.