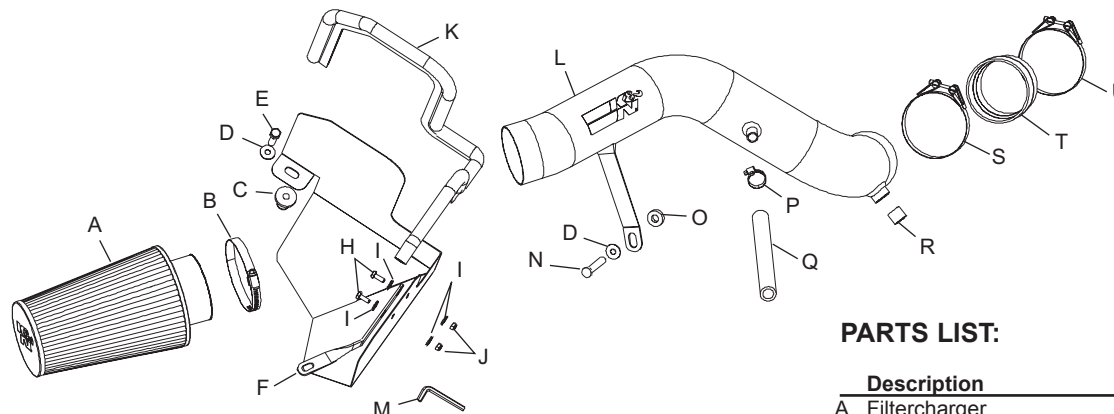


INSTALLATION INSTRUCTIONS

77-1538
DODGE
2004-06 Durango
V8-4.7L

NOTE: This kit was not designed to fit vehicles with a body lift.



TOOLS NEEDED:

- Flat blade screwdriver
- Ratchet
- Extension
- 10mm socket
- 13mm socket
- 15mm socket
- 17mm socket
- 10mm End wrench
- 13mm End wrench
- 15mm End wrench

PARTS LIST:

Description	Qty.	P/N
A Filtercharger	1	RC-3690
B Hose Clamp, #60	1	08624
C Nut, 3/8"-16 Expansion	1	08163
D Washer, 3/8" Flat, SS	1	08134
E Bolt, 3/8"-16 x 1-1/4"L, Hex	1	07779
F Bracket, Twist	1	07197
G Heat Shield, Black	1	074023
H Bolt, M6-1.00 x 16mm L, Hex	2	07812
I Washer, 6mm Flat	4	08269
J Nut, 6mm Nylock	2	07512
K Edge Trim, 3/4" Bulb, 30"L	1	102489
L Intake Tube	1	27421
M Wrench, 9/64" Allen	1	69802
N Bolt, M10-1.50 x 60mm L, Hex	1	07750
O Spacer, 7/16"	1	21715
P Hose Clamp, #8 Mini	1	08410
Q Silicone Hose, 5/8" X 9-3/4"L	1	08177
R Silicone Hose, 17/32 x 11/16"L	1	084054
S Hose Clamp, #375	1	084065
T Silicone Step Hose	1	084091
U Hose Clamp, #350	1	084064

TO START:

1. Turn the ignition OFF and disconnect the vehicle's negative battery cable.



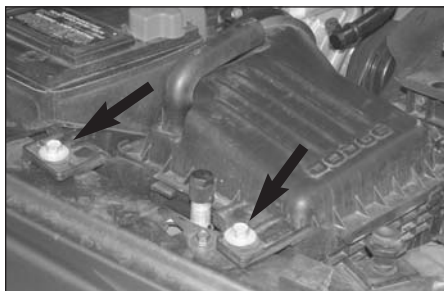
2. On 2005 and earlier vehicles disconnect the crank case vent tube from the vent hose junction above the alternator.



2a. On 2006 and later vehicles, disconnect the crank case vent tube from the rear of the intake manifold.



3. Loosen the intake tube hose clamps and remove the intake tube assembly from the vehicle.



4. Remove the two airbox retaining bolts.



5. Pull up firmly to dislodge the air box from mounting grommet, and remove the airbox from the vehicle.



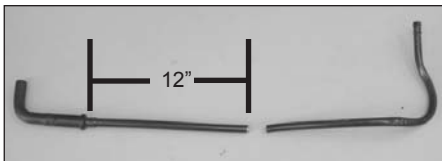
6. Depress the locking tab on the air temp sensor electrical connection and disconnect the air temp electrical connector.



7. Remove the two 10mm resonator retaining bolts, then remove the resonator from the vehicle.



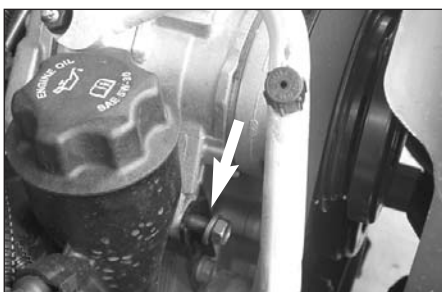
7a. On 2006 and later vehicles, disconnect the crank case vent tube from the rear of the intake manifold.



7b. On 2006 and later vehicles, measure 12" from the crank case check valve and cut the crank case vent tube as shown.



7c. Install the provided silicone hose onto the cut crank case vent hose as shown and then reconnect the hose assembly onto the intake manifold.



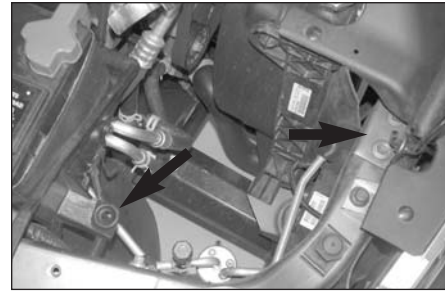
8. Remove the upper a/c bracket bolt shown with a 15mm socket.



9. Install the heat shield bracket (07197) onto the heat shield with the provided hardware.



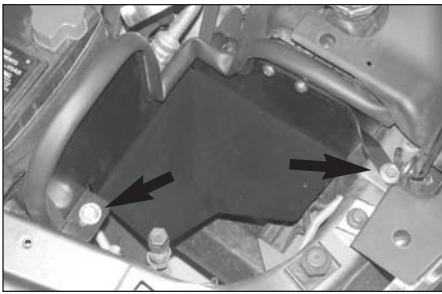
10. Install the provided edge trim onto the heat shield. Trim if necessary.



11. Remove the core support mounting bolt with a 13mm wrench, and pull out the stock air box mounting grommet shown.



12. Install the 3/8" threaded insert provided into the air box mounting grommet hole vacated in step #13.



13. Install the K&N heat shield assembly and secure the mounting bracket to the radiator core support with original bolt removed in step #13. Secure the rear of the heat shield to the 3/8" threaded insert with the provided hardware.



14. Install the silicone hose (08051) onto the throttle body and secure with the provided hardware.



15. Twist the temp sensor counter clockwise to unlock and remove the temp sensor from the factory resonator.



16. Remove the O-ring from the air temp sensor as shown.



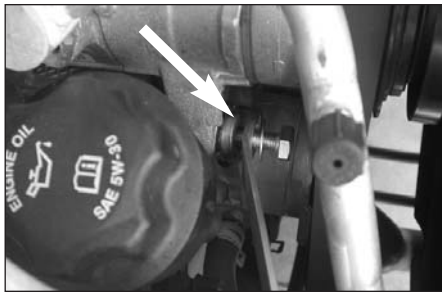
17. Install silicone hose into fitting on the K&N Intake tube as shown.



18. Install the air temperature sensor into the vent on the K&N intake tube as shown.



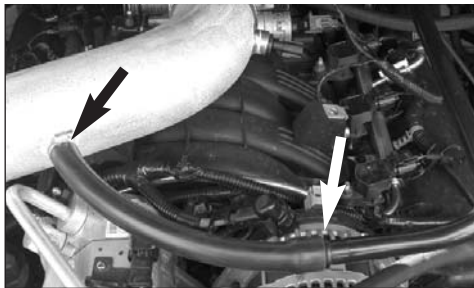
19. Slide the K&N Intake tube into the silicone hose on the throttle body as shown.



20. Line up the bracket with upper alternator mount and install the provided spacer, washer and hex bolt as shown.



21. Snug the hex bolt but do not tighten completely at this time.



22. On 2005 and earlier vehicles connect the provided silicone hose to the crank case vent hard line, then connect the other end to the vent on the K&N intake tube as shown.



22a. On 2006 and later vehicles connect the crank case vent hose installed in step #7c to the K&N intake tube as shown.



23. On 2005 and earlier vehicles remove the crank case vent tube mounting clip from the crank case vent tube on the air box as shown.



24. On 2005 and earlier vehicles install the crank case vent tube mounting clip onto the a/c line and crank case vent tube as shown.



25. Reconnect the air temperature sensor electrical connection as shown.



26. Reconnect the negative battery cable and double check to make sure everything is tightened and properly positioned before starting the vehicle.



31. It will be necessary for all intakes to be checked periodically for realignment, clearance and tightening of all connections. Failure to follow the above instructions or proper maintenance may void warranty.

ROAD TESTING:

1. Start the engine with the transmission in neutral or park, and the parking brake engaged. Listen for air leaks or odd noises. For air leaks secure hoses and connections. For odd noises, find cause and repair before proceeding. This kit will function identically to the factory system except for being louder and much more responsive.

2. Test drive the vehicle. Listen for odd noises or rattles and fix as necessary.

3. If road test is fine, you can now enjoy the added power and performance from your kit.

4. K&N suggests checking the Filtercharger element periodically for excessive dirt build-up. When the element becomes covered in dirt (or once a year), service it according to the instructions on the Recharger service kit, part number 99-5050 or 99-5000.