

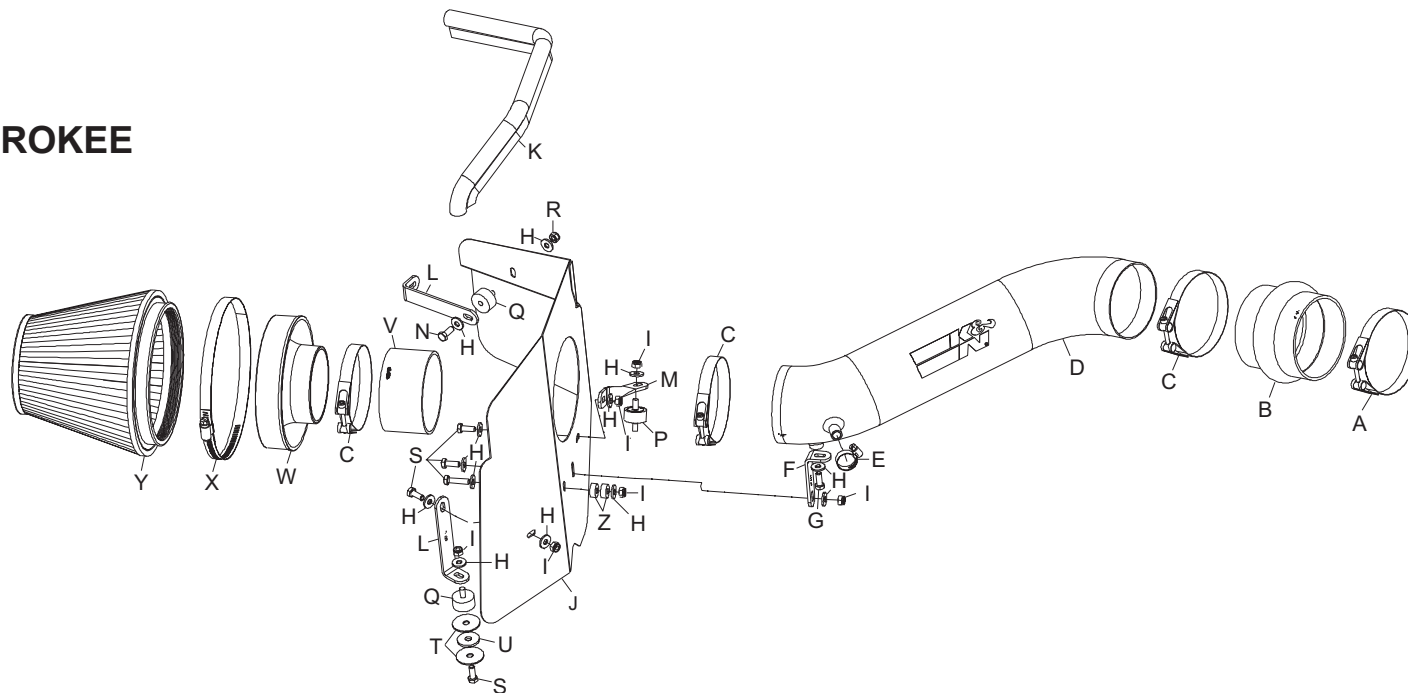
**INSTALLATION INSTRUCTIONS**

**77-1545  
JEEP  
2005-06 GRAND CHEROKEE  
V6-3.7**

**NOTE:** This kit was not designed to fit vehicles with a body lift.

**TOOLS NEEDED:**

- Flat Blade Screwdriver
- Ratchet
- Extension
- 8mm Socket
- 10mm Socket
- 10mm Wrench
- 7/16" Wrench
- 9/64" Allen Wrench

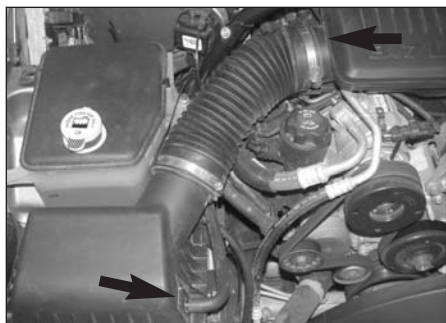


**PARTS LIST:**

Desc.	Qty.	Part#	Desc.	Qty.	Part#	Desc.	Qty.	Part#
A hose clamp; #400, barrel	1	084066	H washer; 1/4"ID X 5/8"od-sae	15	08275	O stud; 1/4-20 m/f, 3/4thk,	1	07959
B hose; 3.5" id to 3-5/8" id x 3-3/8" l	1	084056	I nut; 6mm nylock, hexhead	7	07553	P stud; m6-1.00 m/m,	1	07027
C hose clamp; #375, barrel	3	084065	J heat shield	1	07321	Q stud; m/f, 1/2" X 1" w, m6X1.00	1	070228
D intake tube	1	27429	K edge trim 16"	1	102469	R nut; 1/4-20, nylock, zinc	1	07517
E hose clamp; #006 mini	1	08407	L bracket; large "L"	2	070952	S bolt; m6-1.00 X 16mm hex hd.	5	07703
F bracket; "L"	1	07131	M bracket; twist	1	010117	T washer; 1.25D X .28	2	08151
G bolt; m6-1.00 X 25mm hex hd.	1	07704	N bolt; 1/4-20 X 1/2 hexhead	1	08317	U washer; 1" X .300 X .100	1	21685
						V hose; 3.5"x2"l	1	084052
						W adapter #380	1	21512
						X hose clamp #104	1	08697
						Y filter charger	1	RF-1048
						Z spacer; 625"od X .250" id X .250" l,	2	06555

**TO START:**

1. Turn the ignition OFF and disconnect the vehicle's negative battery cable.



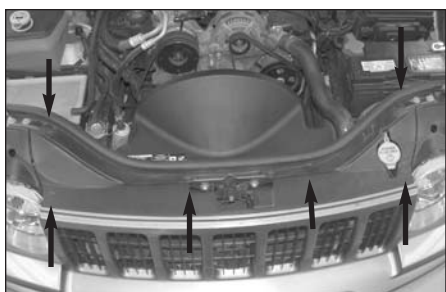
2. Loosen the hose clamp, which secures the stock intake tube to the intake plenum, and disconnect the crank case vent hose from the air box lid.



3. Unclip the upper air box retaining clips and remove the upper air box and intake tube assembly as shown.



4. Disconnect the vacuum canister hose shown.



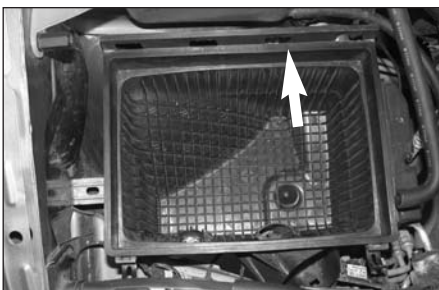
5. Using a small screwdriver, release the center holding pins in the six grill retaining clips shown.



6. Remove the six grill retaining clips from the grill, then tilt the grill forward and remove from the vehicle.



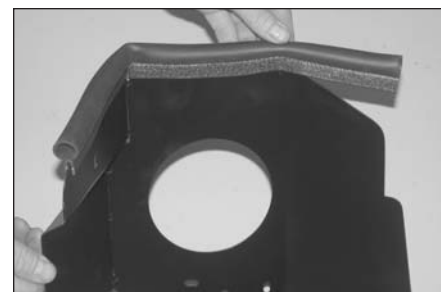
7. Pull the fresh air duct to disconnect it from the air box and then remove it from the vehicle.



8. Remove the air box mounting bolt shown.



9. Remove the lower air box from the vehicle as shown.



10. Install the provided edge trim onto the heat shield as shown.

**NOTE:** Some trimming of the edge trim may be necessary.



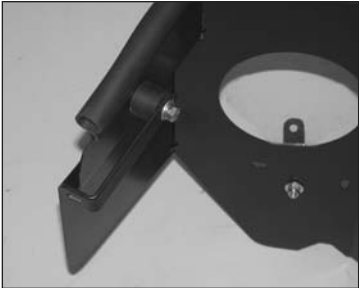
11. Install the tube mounting bracket (07131) onto the heat shield with the provided hardware as shown.



12. Install the "L" bracket (070952) onto the heat shield with provided hardware as shown. **NOTE:** The bracket mounts on the inside of the heat shield with the "L" positioned to the outside of the heat shield.



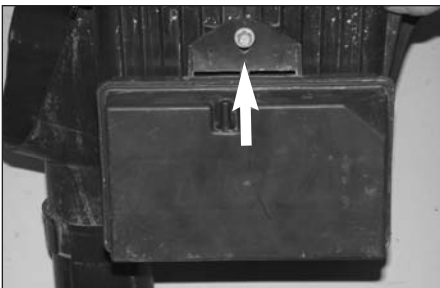
13. Install the 1/4"-20 male/female rubber mounted stud onto the "L" bracket (070952) with the provided hardware as shown.



14. Install the bracket/rubber mounted stud assembly onto the heat shield as shown using the provided hardware.



15. Install the twist bracket onto the heat shield as shown using the provided hardware.



16. Remove the bolt which secures the vacuum reservoir to the air box and then remove the reservoir from the air box.



17. Using the provided spacer, install the vacuum reservoir onto the heat shield as shown. **NOTE: Due to manufacturing tolerances, 2 spacers may be needed.**



18. Remove the coolant reservoir retaining nut and air box mounting grommet shown.



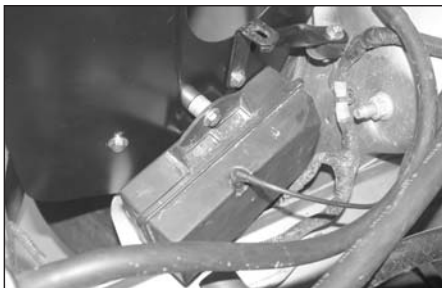
19. Using the two fender washers and one rubber washer, install the 6mm male/female rubber mounted stud onto the lower air box mount as shown.



20. Install the 6mm male/male rubber mounted stud onto the upper air box mount as shown.



21. Install the heat shield assembly into the vehicle and secure it to the mounting locations with the provided hardware.



22. Reconnect the vacuum reservoir vacuum line.



23. Install the silicone hose (08699) onto the intake plenum and secure with the provided hose clamp as shown.



24. Install the K&N intake tube into the silicone hose at the throttle body and onto the saddle clamp, then secure with the provided hose clamps as shown.



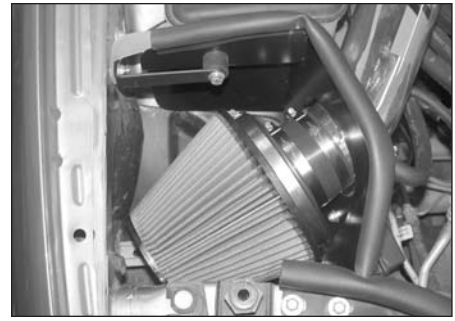
25. Connect the crank case vent hose onto the K&N intake tube as shown and secure with the provided hose clamp.



26. Install the filter adapter into the filtercharger as shown, secure with the provided hose clamp.



27. Install the silicone hose (084052) onto the filter charger assembly and secure with the provided hose clamp.



28. Install the filter charger assembly onto the K&N intake tube as shown and secure with the provided hose clamp.



29. Reinstall the grill assembly with the factory retaining clips removed in step #5.



30. Reconnect the negative battery cable and double check to make sure everything is tightened and properly positioned before starting the vehicle.

31. It will be necessary for all intakes to be checked periodically for realignment, clearance and tightening of all connections. Failure to follow the above instructions or proper maintenance may void warranty.

#### ROAD TESTING:

1. Start the engine with the transmission in neutral or park, and the parking brake engaged. Listen for air leaks or odd noises. For air leaks secure hoses and connections. For odd noises, find cause and repair before proceeding. This kit will function identically to the factory system except for being louder and much more responsive.
2. Test drive the vehicle. Listen for odd noises or rattles and fix as necessary.
3. If road test is fine, you can now enjoy the added power and performance from your kit.
4. K&N suggests checking the Filtercharger element periodically for excessive dirt build-up. When the element becomes covered in dirt (or once a year), service it according to the instructions on the Recharger service kit, part number 99-5050 or 99-5000.